

## ROOF CLIPS

Roof clips are engineered brackets designed to secure **Paladin**® heating cables to the roof surface. The roof clips provide an easy, strong and secure support for cabling on sloped roofs with shingles or metal roofs with standing seams. The roof clips can be secured with screws, nails, or appropriate adhesives. (May vary from illustration)



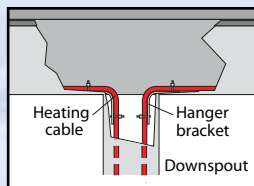
## CABLE GUARDS

Cable guards are available to provide mechanical protection for the **Paladin**® heating cable wherever it may pass over or onto an edge, which may result in injury to the outer jacket. The cable guard simply wraps around the **Paladin**® heating cable for easy, effective protection.



## DOWNSPOUT HANGERS

Downspout hanger kits are designed to effectively suspend the heating cable in the gutter downspout while providing strain relief and mechanical protection against sharp edges.



## SKYLIGHTS, DORMERS & VALLEYS

**Paladin**® can be efficiently used to trace around any skylight or dormer windows. **Paladin**® can also be used singly or combined with **EDGE-CUTTER**® to extend up valleys.

**Heat-Line**® offers other heating cables and kits depending on your roof de-icing application. Please contact **Heat-Line**® to discuss your particular roofing requirements.

## THE HEAT-LINE® PRODUCT GROUP

**Heat-Line**®

**ArcticVent**®

**Retro-Line**®

**Kompensator**®

**Paladin**®

**EDGE-CUTTER**®

**CARAPACE**®

**EXT Series**

**Retro-DWS**®

**Commercial/**

**Retro-FM**®

**Industrial**

**Rizer-Line**®

**self-regulating**

**heating cables**

## SPECIAL REQUIREMENTS

Since 1988 Heat-Line® has been specializing in freeze protection of all types. If you have a special application of any kind, give us a call. Special system designs are common to us. We manufacture many other innovative products not mentioned in this brochure.

**Paladin**® and **EDGE-CUTTER**® are registered trademarks of Heat-Line® Corporation.

Patented

For more information contact



1-800-584-4944

1095 Green Lake Road, PO Box 4100, Carnarvon ON Canada K0M 1J0

☎ 705-754-4545 ☎ 705-754-4567

www.heatline.com • info@heatline.com

Heat-Line® is a division of Christopher MacLean Ltd.

HLEOG-0115-1



# EDGE-CUTTER® & PALADIN®

by Heat-Line®

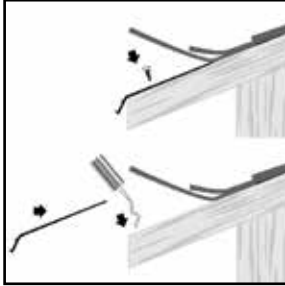
**Paladin**® is an award winning heating cable system that can be installed in the conventional serpentine configuration, or in conjunction with **EDGE-CUTTER**® channel flashings for effective roof de-icing. When combined, **EDGE-CUTTER**® and **Paladin**® offer an aesthetically pleasing roof de-icing system which easily eliminates roof edge ice build-up, eave icing, icicles and ice dams.

Whichever combination of Heat-Line® products you choose; you will have the most reliable, energy efficient roof de-icing system on the market.

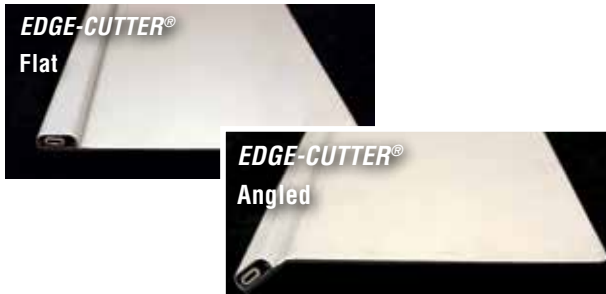


## EDGE-CUTTER®

**EDGE-CUTTER®** channel flashings are designed to prevent ice build-up, icicles, or ice dams on the roof edge. The flashing can be used with various roofing materials such as asphalt shingles, aluminum, steel and even slate. Each 4' aluminum flashing is feathered and extends 5.5" under your roofing surface to provide heat transfer up your roof. The flashing is installed under the roof using screws, nails, or adhesives. The **Paladin®** system is then placed in a channel and cap secures the heater in place.



The **EDGE-CUTTER®** flashing can be used on low-pitched roofs, fascia, valleys, and drip edges. If a metal roof is present, the **EDGE-CUTTER®** channel flashing should be ordered with a 6 mil urethane membrane factory installed directly onto the flashing. The membrane prevents galvanic oxidation between dissimilar metals.



Flat and angled **EDGE-CUTTER®** channel flashings are available to suit different application requirements. Angled is commonly used for the leading edge while flat is often used to trace higher up the roof edge or in valleys.

### Measuring **EDGE-CUTTER®** and **Paladin®** Systems

For measuring of **EDGE-CUTTER®** and **Paladin®** heating cable please see installation instructions, available through

[www.heatline.com](http://www.heatline.com) or contact Heat-Line® at **1-800-584-4944**.

## PALADIN®

**Paladin®** is an award winning cable that can be used for roof and gutter de-icing. It employs the unique performance and operating characteristics of self-regulating heating cable technology. **Paladin®** can be used in conjunction with **EDGE-CUTTER®** channel flashings or in the conventional serpentine configuration using roof clips.

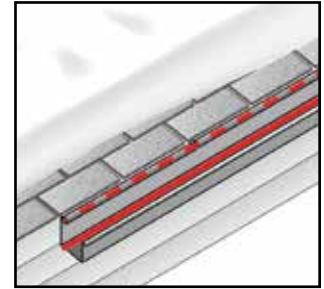


**Paladin®** can be used in a variety of applications including, cottages, homes, resorts and farms. Snow sensors, thermostats, timers or other approved devices can be added to the system for increased energy efficiency.



## EDGE-CUTTER® AT A GLANCE

- 4' feathered aluminum flashing complete with cap
- Fast, easy installation
- For new or existing roofs
- Aesthetically pleasing
- Many different uses
- Can be used under metal, asphalt and slate roof
- Membrane available to prevent oxidation between dissimilar metals



## PALADIN® AT A GLANCE

- cCSAus approved (Canada and USA)
- 5 year limited warranty
- Most reliable and energy efficient system on the market
- Can be easily installed on the roof edge with **EDGE-CUTTER®** or in the serpentine configuration using roof clips
- Can be used with a variety of control devices including thermostats and timers.
- Available as a plug-in ground fault protected model, or can be ordered to be electrically connected to a ground fault protected circuit. (CS)



### **PALADIN®** heating cables may be used on:

- Roofs made from all types of standard roofing materials, including shake, shingle, rubber, tar, wood, metal, and plastic.
- Gutters made from standard materials, including metal and plastic.
- Downspouts made from standard materials, including metal and plastic.

